

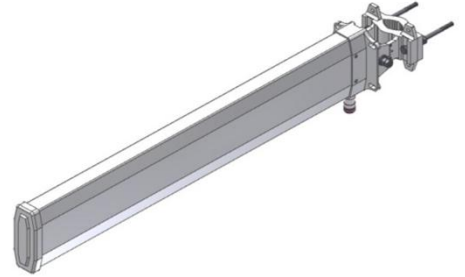
Multi-Band Medium Log Antenna

824~894 MHz, 1710~2170 MHz, 2300~2690MHz / 10, 11, 12dBi

CPWW-YG-1012

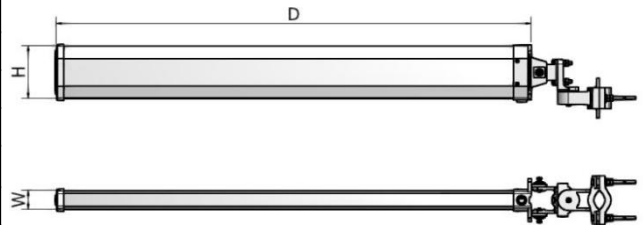
i. Electrical Specification

Frequency Range	824~894	1710~2170	2300~2690	
Polarization	Vertical	Vertical	Vertical	
Band Width	70 MHz	MHz		
Gain	≥ 10 dBi	≥ 11 dBi	≥ 12 dBi	
Beam width	Horizontal	55° ± 10°	50° ± 10°	50° ± 10°
	Vertical	45° ± 10°	40° ± 10°	40° ± 10°
F-B ratio (Horizontal & Vertical)	18dB @ 180°			
VSWR	1 : 1.5			
Impedance	50 Ω			
IMD (3rd)	≤ -150dBc @ 2x30dBm			
Maximum input power	50 W			

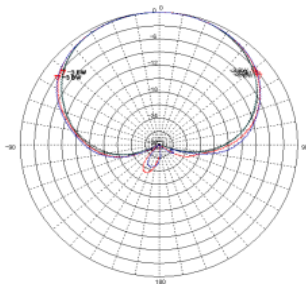


ii. Mechanical Specification

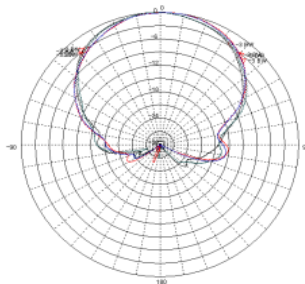
Radom Dimension (HxWxD)	100 x 36 x 870 mm
Weight (Include bracket)	≤ 2 Kg
Connector Type	N-J (Female)
Radome Material	ASA
Radome Color	취색(Pantone 427C ~429C)
Mechanical Tilt	Up, Down ± 30°
	Shaft ± 45°
Temperature	-40 °C ~ 70 °C
Packing Size (H x W x D) 10SET	-
Packing Weight 10SET	-



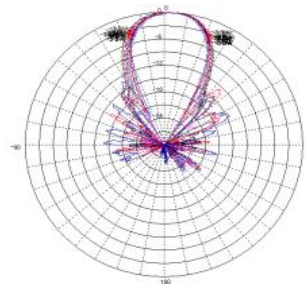
iii. Radiation Pattern



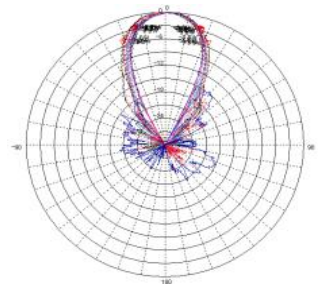
Horizontal Pattern
(Low Band)



Vertical Pattern
(Low Band)



Horizontal Pattern
(High Band)



Vertical Pattern
(High Band)